

2005-2006 Officers

Chair:	Ann Marie Jones 864-281-4903 ann.marie.jones@fluor.com
Vice-Chair:	David Harshbarger 864-281-4214 david.harshbarger@fluor.com
Secretary:	Jim Young 864-281-8688 sec@wscaiche.org
Treasurer:	David Laursen 864-281-5981 david.laursen@fluor.com
Webmaster:	Eugene Gill 864-281-8627 eugene.gill@fluor.com

Other officers on the Executive Committee are the following former Chairs:

❖ **Rick Vogel, John Moore, Mary Ferris**

April Meeting – Thank You: Engelhard Plant Tour –

Our thanks to Frank Lamson-Scribner, plant manager, and staff engineers Gerald Murphy, John Lingo and Paul Stafford for hosting our tour and providing dinner. This event brought the biggest attendance of the year all the way out to Seneca.

Engelhard is one of the largest surface and material science companies in the world. The Seneca site manufactures precious metal catalysts, specialty zeolites, water treatment products, and recovers precious metals from spent catalysts. The introduction and tour gave us a good overview of Engelhard's business activities and an up-close view of the types of processing steps and equipment used in their catalysts production operations.

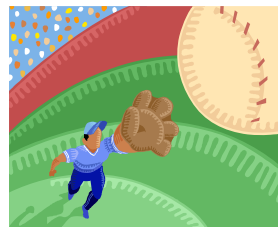
2006/7 Officer Elections

It's time for WSCAICHE 2006-2007 officer elections:

Office	Candidate	Your Vote
Chair	David Harshbarger, Fluor	
Vice Chair	OPEN	
Secretary	Rick Vogel, Fluor	
Treasurer	David Laursen, Fluor	

Please e-mail your vote to sec@wscaiche.org or call at 281-8688, before 13 May 2005.

Candidate bios are posted on the website. Write-in candidates are welcome.



May Meeting Notice

Our May meeting will take the form of a family night at the **Greenville Drive Baseball Stadium**. May is typically the month during which we have our annual social. This year the unanimous vote was for a visit with one of our newest neighbors in town, the Greenville Drive.

The evening's entertainment will bring an exciting game with the Greensboro Grasshoppers, all preceded by a picnic dinner at the complex; with fireworks finale. We will have reserved seating and a picnic dinner for members and their families.

An Evening at Greenville Drive Baseball

DATE: Friday, May 26, 2006

TIME: 6:05 – 7:35 p.m. Dinner at the Stadium
7:05 p.m. Game Time

LOCATION: **Greenville Drive Baseball Stadium**
945 S. Main Street, Greenville SC

(The West End Field is located on the city block bordered by Main Street, Field Street, and Markley Street. The stadium is visible from Augusta Street.)

COST: ◦ **MEMBERS** PAY \$5 PER FAMILY OR \$2 FOR SINGLES
Cost applicable to attending the game for members who respond with request for number of tickets before the deadline. A Picnic Dinner is included and is paid for by your local AIChE Chapter.

◦ **NON-MEMBERS** PAY \$20.00 PER FAMILY OR \$5 FOR SINGLES (WHO PREVIOUSLY ATTENDED MEETINGS, EXCEPTIONS WILL BE CONSIDERED).

◦ **AICHE WILL NOT PAY FOR PARKING.**

(REMEMBER TO ALLOW EXTRA TIME FOR PARKING.)

Please note: We reserve the right to refuse any request at our discretion.

DIRECTIONS: SEE DETAILED DRIVING DIRECTIONS ON PAGE 2.

Please reply with your NAME, AIChE ID number, number of tickets and first names of family members attending. (Important please indicate if you are a member and supply your membership number) to Jim Young by Tuesday, May 23rd sec@wscaiche.org or call (864)281-8688.

Reflections from the Chair

This exciting year appeared to absolutely fly by. WSCAICHe members were treated to an enlightening plant tour at Englehard in Seneca. We learned about the importance of Networking, heard about the new Biotechnology initiative at Clemson University, and had several interesting speakers. We gave back to the local community by designing the "Kids Engineering-Making It Matter" science workshop for Tweens during Engineer's Week, at the Roper Mountain Science Center; and supporting the school district's Science Fair competition with judges and prizes. As in the past, we also provided a scholarship for a deserving Clemson Student.

I want to thank the officers for planning and executing this year's very successful program. It all goes to show that teamwork makes tasks interesting and a pleasure. The following persons were instrumental in delivery of our program:

- Mary Ferris, Rick Vogel, John Moore - Executive Committee
- Eugene Gill - Webmeister
- Jim Young - Secretary
- David Laursen -Treasurer
- David Harshbarger -Vice-Chair.

This year's remaining program activity, an evening with the

Greenville Drive, promises to be lively and fun filled. Please vote, and if you so desire, write yourself in as a candidate for one of the positions. Following the last meeting for the spring, we will recess for the summer months and resume in September. The executive committee will meet during the summer to plan the program for next year. I wish you a wonderful and safe summer.

Regards,
Ann Marie Jones - Chair

Directions to Greenville Drive Baseball Stadium:

IN ORDER TO ENTER THE PARK, MEET AICHE MEMBERS DISTRIBUTING TICKETS AT THE GATE WITH YOUR ID 5:50 - 6:15. YOUR NAME MUST BE ON THE PRE-REGISTERED LIST.

▶ From Augusta Street

Go North on Augusta Street toward downtown Greenville. Turn Right onto Harris Street. County Square Parking (Free!) is on the left.

▶ From I-185

Go North on I-185 toward downtown Greenville. Continue straight as I-185 becomes Mills Avenue. Turn Left onto Augusta Street. Turn Right onto Harris Street. County Square Parking (Free!) is on the left



AIChE
c/o Secretary Jim Young
100 Fluor Daniel Drive
Greenville, SC 29607

RETURN SERVICE REQUESTED